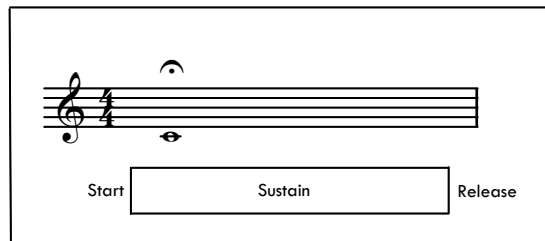


# Trumpet Warm Up Exercises

Long tones are lines designed to help a player with quality of sound, technique, and air flow.

1. Always breathe the same regardless of what is played.
2. Start every note the same (tongue in the same place).
3. Keep the same vowel sound throughout each note.
4. Keep body still after the end of a note.



Exercise No. 1 (Long Tones)

Keep body still during the rest as well as while playing.

Exercise No. 2 (Descending Intervals)

Keep air flowing through both notes - all the way to the next measure.

Exercise No. 3 (Ascending Intervals)

What changes? What stays the same?

Exercise No. 4 (Long Tone 1A)

Keep a fast air stream for all 6 counts.

Exercise No. 5 (Long Tone 1B)

Adjust aperture for lower note and keep air flowing through all 3 notes.

Exercise No. 6 (Longtone 1C)

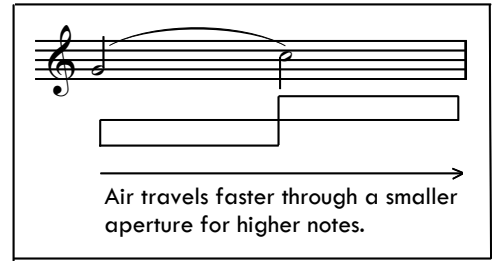
Adjust aperture for higher note and keep a fast air stream flowing through all 3 notes.

Exercise No. 7 (Longtone 1D)

## Trumpet Warm Up Exercises

A lip slur is smoothly connecting two or more notes of the same valve combination with air only. The notes under a slur marking are not to begin with the tongue.

1. Keep air flowing to the end of the very last note.
2. The aperture gets smaller for higher notes.
3. The air speed increases for higher notes.



Exercise No. 8

Exercise No. 9

Exercise No. 10

Exercise No. 11

# Trumpet Warm Up Exercises

Exercise No. 12



12 1 2 open

Detailed description: This exercise is written on a single treble clef staff. It consists of four groups of notes, each connected by a dashed slur. The first group contains two notes: a quarter note G4 and a quarter note A4. The second group contains two notes: a quarter note Bb4 and a quarter note B4. The third group contains two notes: a quarter note C5 and a quarter note B4. The fourth group contains two notes: a quarter note A4 and a quarter note G4. The notes are spaced across the staff to cover a range from G4 to C5.

Exercise No. 13



Detailed description: This exercise is written on a single treble clef staff. It consists of four groups of notes, each connected by a dashed slur. The first group contains four notes: quarter notes G4, A4, B4, and C5. The second group contains four notes: quarter notes Bb4, B4, C5, and B4. The third group contains four notes: quarter notes A4, B4, C5, and B4. The fourth group contains four notes: quarter notes G4, A4, B4, and C5. The notes are spaced across the staff to cover a range from G4 to C5.



Detailed description: This exercise is written on a single treble clef staff. It consists of four groups of notes, each connected by a dashed slur. The first group contains four notes: quarter notes G4, A4, B4, and C5. The second group contains four notes: quarter notes Bb4, B4, C5, and B4. The third group contains four notes: quarter notes A4, B4, C5, and B4. The fourth group contains four notes: quarter notes G4, A4, B4, and C5. The notes are spaced across the staff to cover a range from G4 to C5.

Exercise No. 14



Detailed description: This exercise is written on a single treble clef staff. It consists of four groups of notes, each connected by a dashed slur. The first group contains four notes: quarter notes G4, A4, B4, and C5. The second group contains four notes: quarter notes Bb4, B4, C5, and B4. The third group contains four notes: quarter notes A4, B4, C5, and B4. The fourth group contains four notes: quarter notes G4, A4, B4, and C5. The notes are spaced across the staff to cover a range from G4 to C5.



Detailed description: This exercise is written on a single treble clef staff. It consists of four groups of notes, each connected by a dashed slur. The first group contains four notes: quarter notes G4, A4, B4, and C5. The second group contains four notes: quarter notes Bb4, B4, C5, and B4. The third group contains four notes: quarter notes A4, B4, C5, and B4. The fourth group contains four notes: quarter notes G4, A4, B4, and C5. The notes are spaced across the staff to cover a range from G4 to C5.

Exercise No. 15



Detailed description: This exercise is written on a single treble clef staff. It consists of four groups of notes, each connected by a dashed slur. The first group contains four notes: quarter notes G4, A4, B4, and C5. The second group contains four notes: quarter notes Bb4, B4, C5, and B4. The third group contains four notes: quarter notes A4, B4, C5, and B4. The fourth group contains four notes: quarter notes G4, A4, B4, and C5. The notes are spaced across the staff to cover a range from G4 to C5.

Exercise No. 16



Detailed description: This exercise is written on a single treble clef staff. It consists of four groups of notes, each connected by a dashed slur. The first group contains four notes: quarter notes G4, A4, B4, and C5. The second group contains four notes: quarter notes Bb4, B4, C5, and B4. The third group contains four notes: quarter notes A4, B4, C5, and B4. The fourth group contains four notes: quarter notes G4, A4, B4, and C5. The notes are spaced across the staff to cover a range from G4 to C5.



Detailed description: This exercise is written on a single treble clef staff. It consists of four groups of notes, each connected by a dashed slur. The first group contains four notes: quarter notes G4, A4, B4, and C5. The second group contains four notes: quarter notes Bb4, B4, C5, and B4. The third group contains four notes: quarter notes A4, B4, C5, and B4. The fourth group contains four notes: quarter notes G4, A4, B4, and C5. The notes are spaced across the staff to cover a range from G4 to C5.