

The Musical Alphabet

Lines and Spaces of The Staff (Treble Clef)

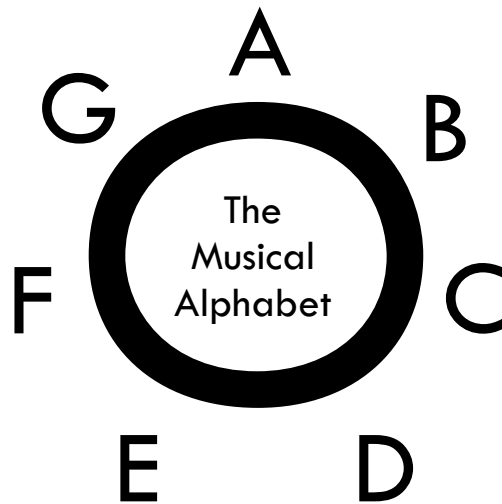
Just like the English language, music has an alphabet of its own - the Musical Alphabet. This alphabet consists of the first 7 letters of the English alphabet (A B C D E F G). Since there are more musical notes than these 7 letters, the musical alphabet repeats is repeated again and again. Unlike the English alphabet, the musical alphabet can be used forward (ascending) or backward (descending) and can start on any letter.

Can you say it going forward?

Can you say it going backward?

Can you say it starting on any letter (forward and backward) ?

Can you say every other letter?



Here are the note names as they appear on the lines and spaced of the staff for treble clef.

ascending (going up) → → descending (going down)

E F G A B C D E F E D C B A G F E

Here are the note names that only appear on the 5 lines of the staff.

Every Good Boy Does Fine

Here are the note names that only appear on the 4 spaces of the staff.

F A C E

Name _____ Instrument _____

Note Name Sheet No. 1

Lines and Spaces of the Staff (Treble Clef)

The 5 Lines of the Musical Staff The 4 Spaces of the Musical Staff

Every Good Boy Does Fine F A C E

Line No. 1 Lines of the staff

Line No. 2 - Lines of the staff

Line No. 3 - Lines of the staff

Line No. 4 - Spaces of the staff

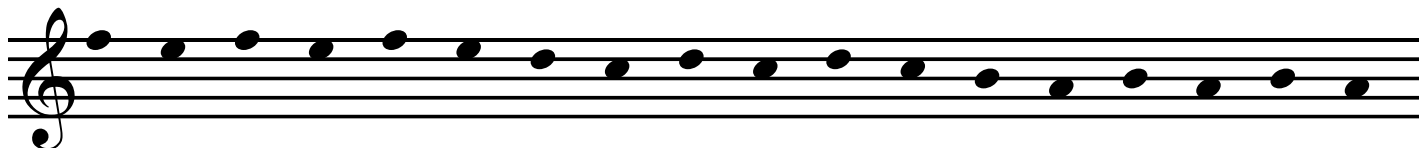
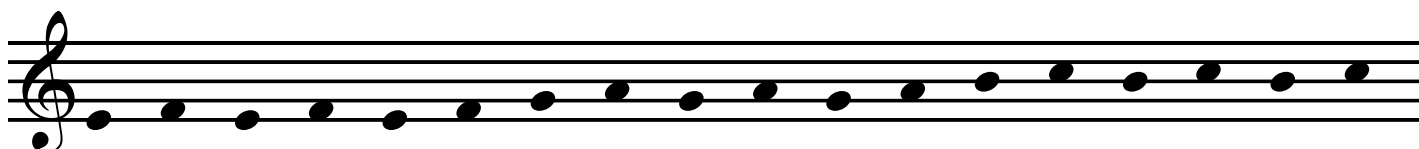
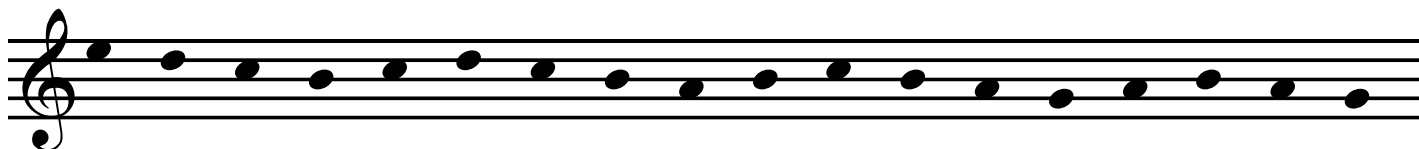
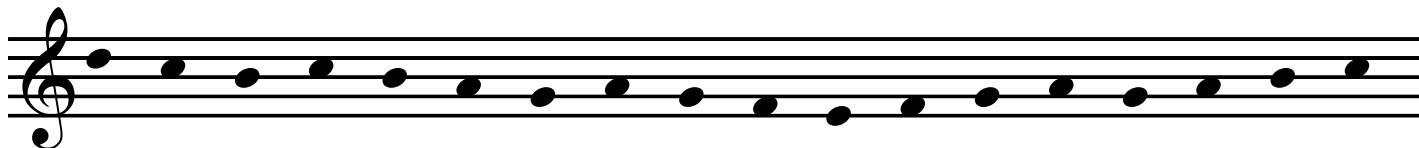
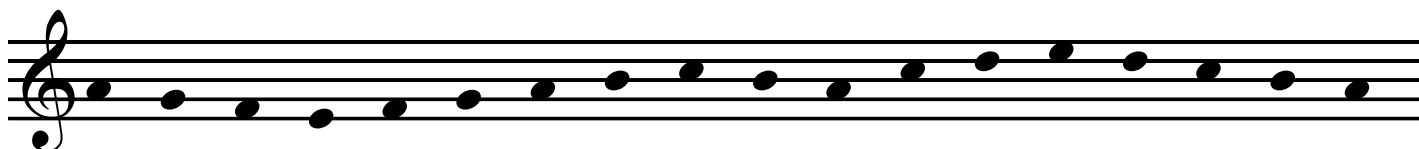
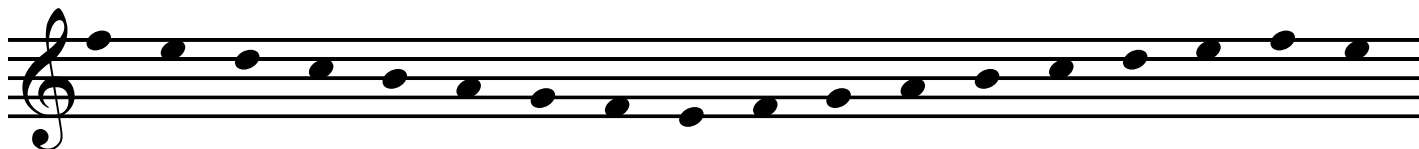
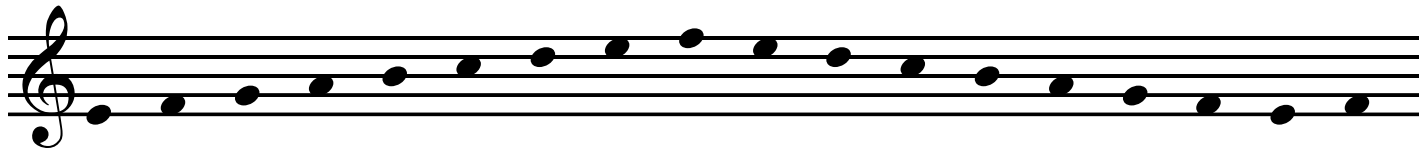
Line No. 5 - Spaces of the staff

Line No. 6 - Spaces of the staff

Name _____ Instrument _____

Note Name Sheet No. 2

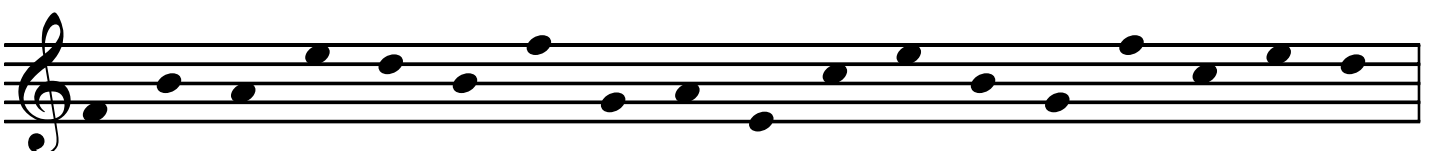
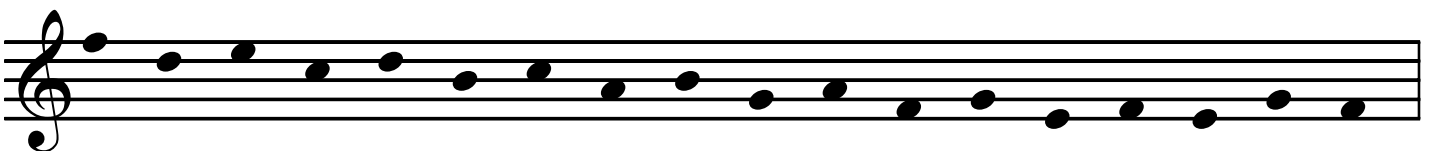
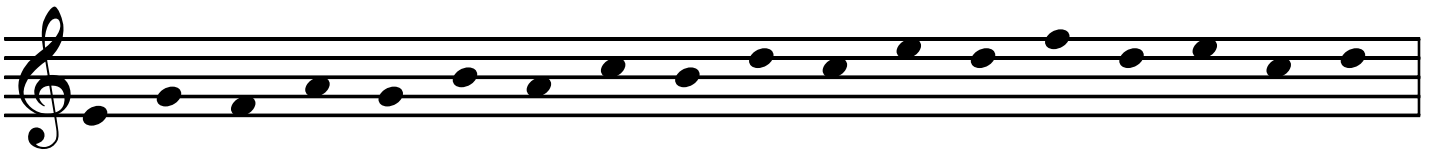
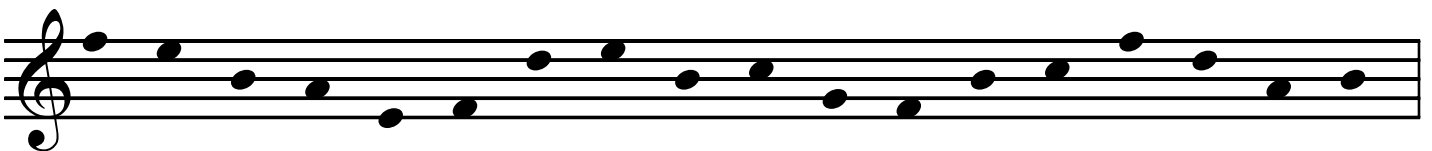
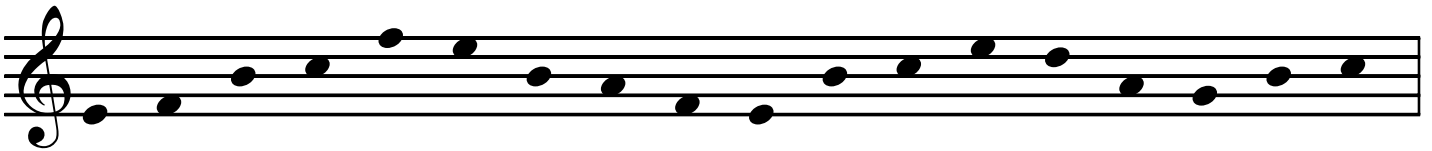
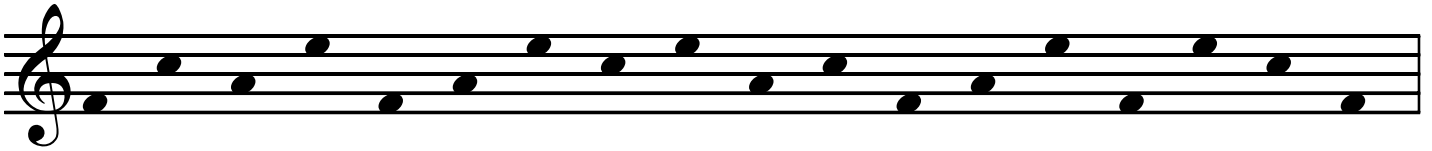
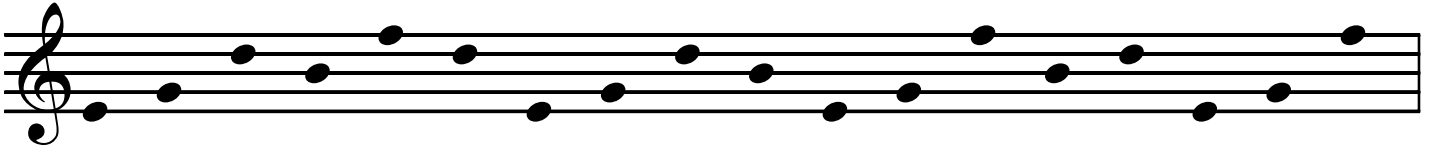
Lines and Spaces of the Staff (Treble Clef)



Name _____ Instrument _____

Note Name Sheet No. 3

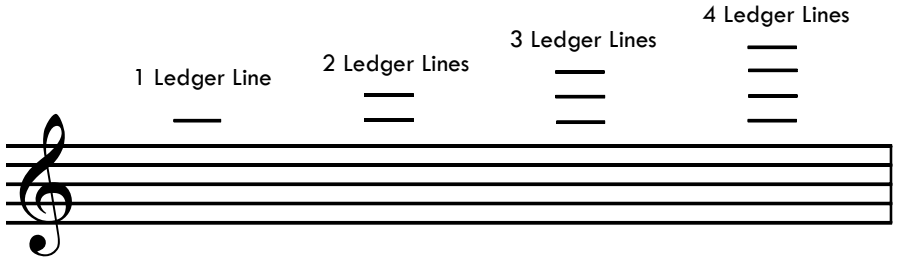
Lines and Spaces of the Staff (Treble Clef)



Note Name Sheet No. 4

Note Above the Staff (Treble Clef)

A ledger line is a momentary extension of the musical staff for notes above or below the traditional 5 lines. A note still occurs on either a line of a space even beyond the staff.



E G B D F F A C E

Name _____ Instrument _____

Note Name Sheet No. 5

Notes Below the Staff (Treble Clef)

A musical staff with a treble clef. Below the staff, nine notes are written. The first five notes are E, G, B, D, and F. The next five notes are F, A, C, and E. Each note has a horizontal line above it indicating its pitch.

E G B D F F A C E

A musical staff with a treble clef. Below the staff, a sequence of 15 notes is written. The notes are: E, G, B, D, F, A, C, E, G, B, D, F, A, C, E. Each note has a horizontal line above it.

A musical staff with a treble clef. Below the staff, a sequence of 21 notes is written. The notes are: E, G, B, D, F, A, C, E, G, B, D, F, A, C, E, G, B, D, F, A, C, E. Each note has a horizontal line above it.

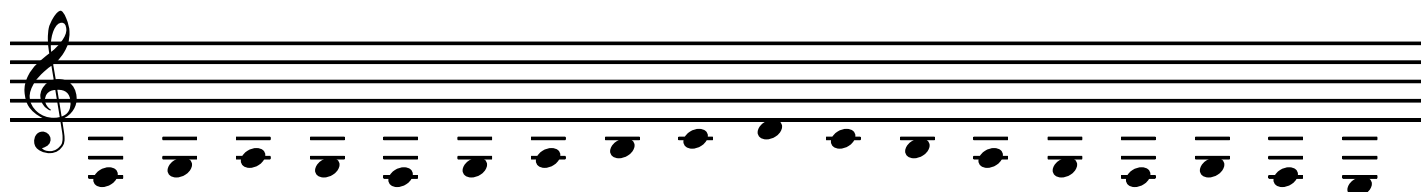
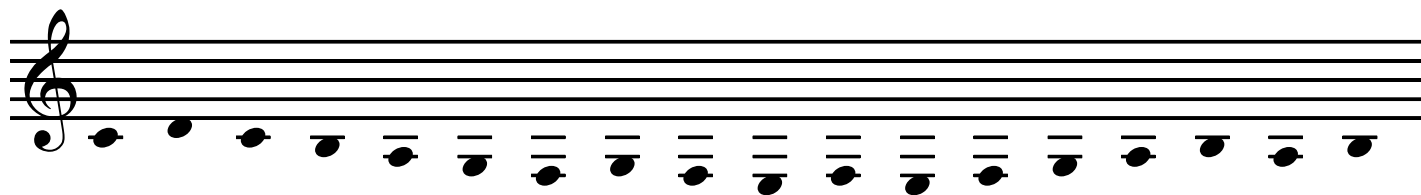
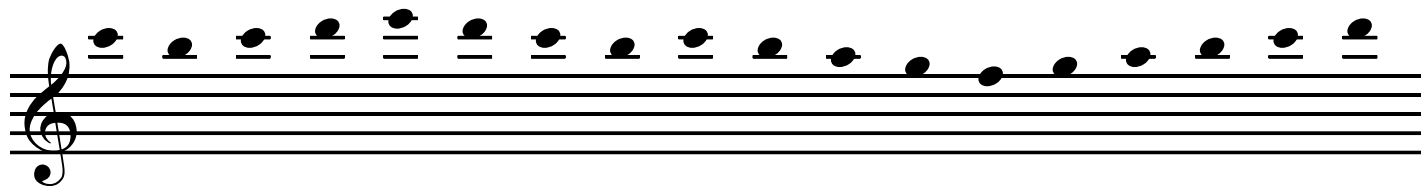
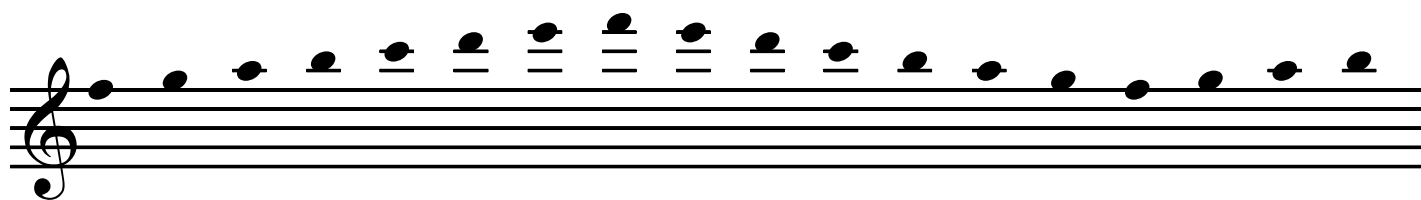
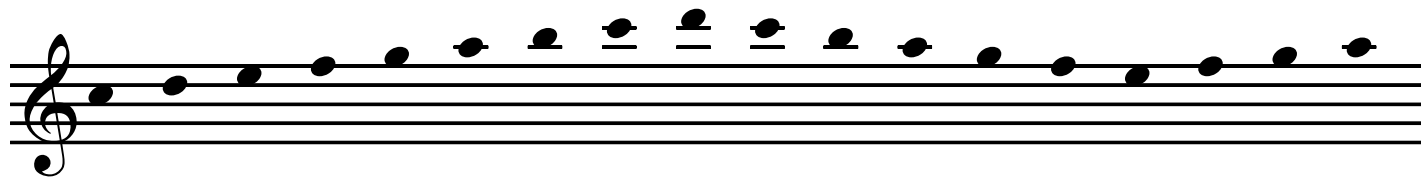
A musical staff with a treble clef. Below the staff, a sequence of 21 notes is written. The notes are: E, G, B, D, F, A, C, E, G, B, D, F, A, C, E, G, B, D, F, A, C, E. Each note has a horizontal line above it.

A musical staff with a treble clef. Below the staff, a sequence of 21 notes is written. The notes are: E, G, B, D, F, A, C, E, G, B, D, F, A, C, E, G, B, D, F, A, C, E. Each note has a horizontal line above it.

Name _____ Instrument _____

Note Name Sheet No. 6

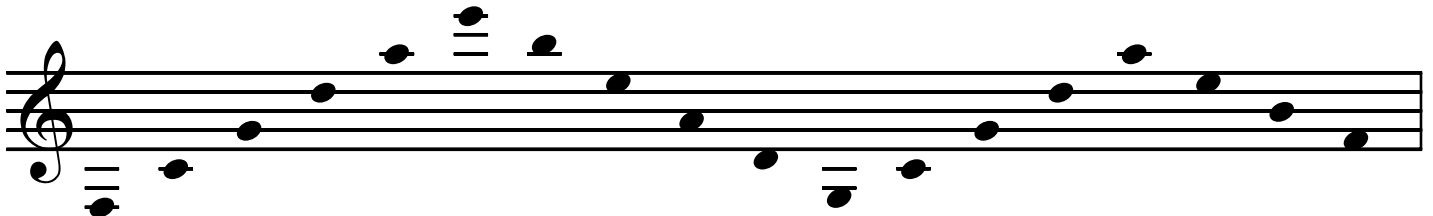
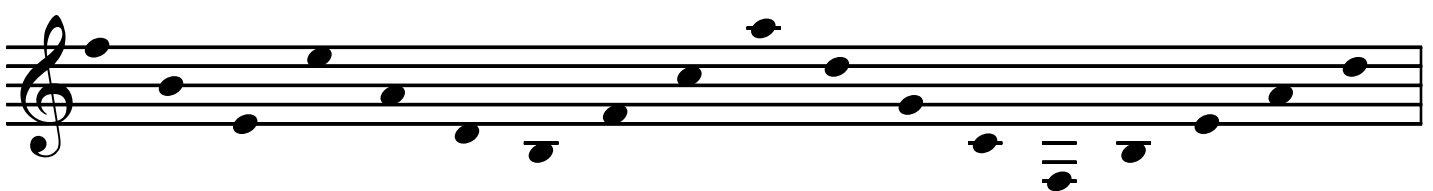
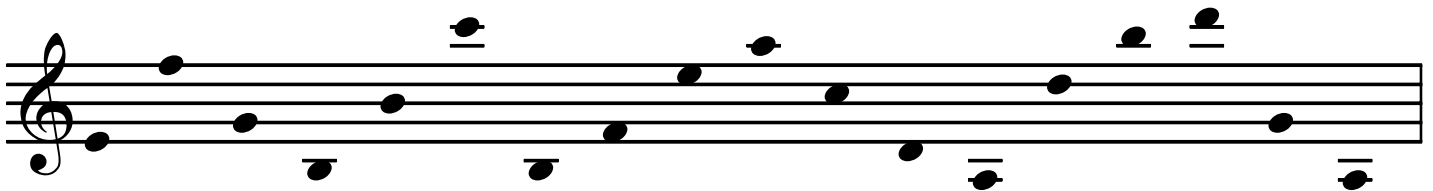
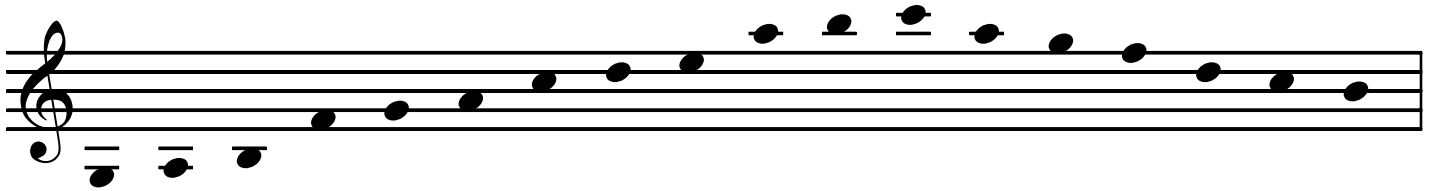
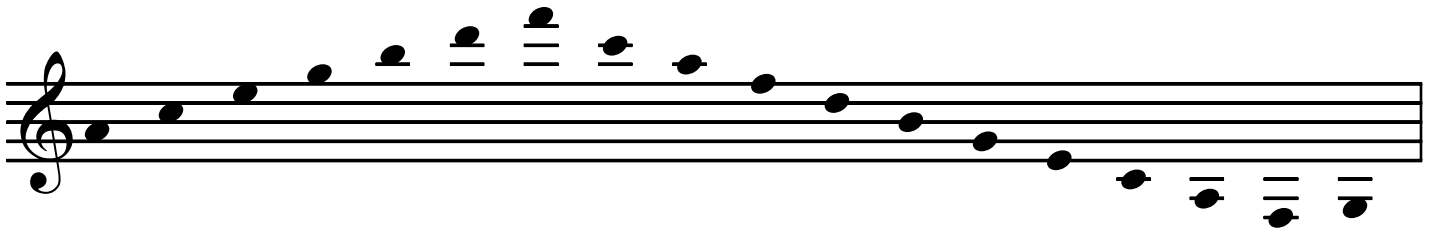
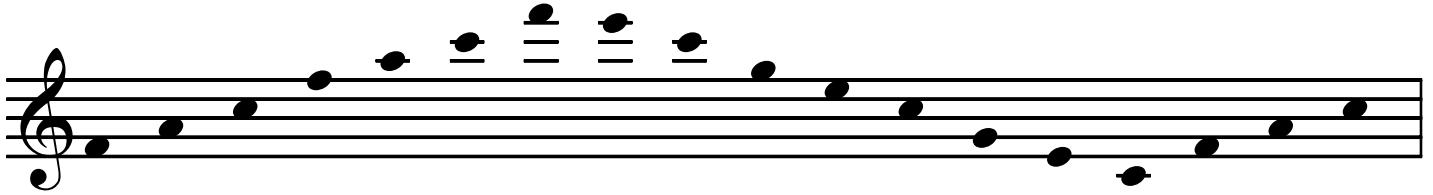
Lines and Spaces of the Staff (Treble Clef)



Name _____ Instrument _____

Note Name Sheet No. 7

Lines and Spaces of the Staff (Treble Clef)

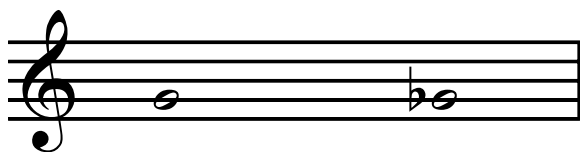


Note Name Sheet No. 8

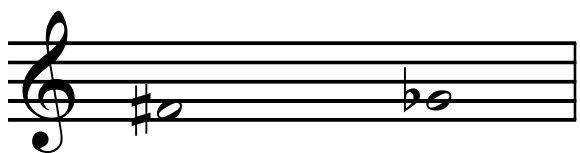
Sharps, Flats, Enharmonics



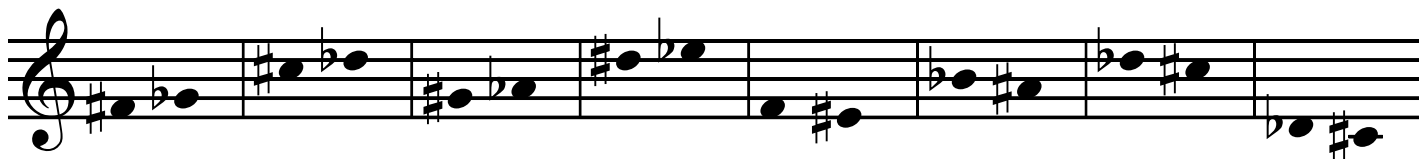
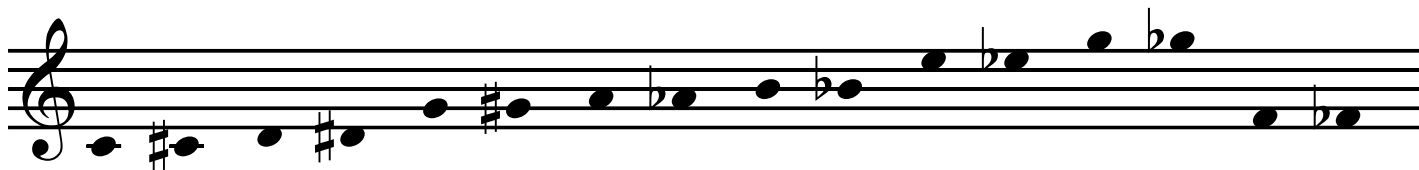
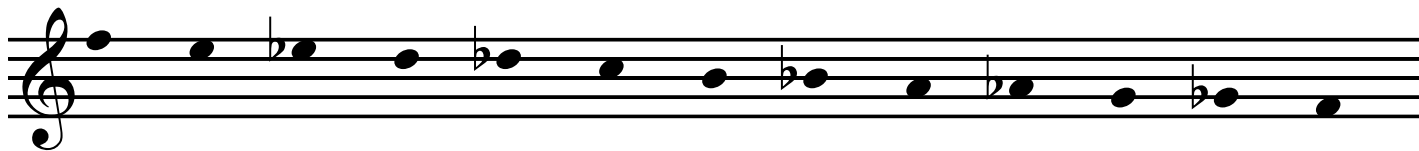
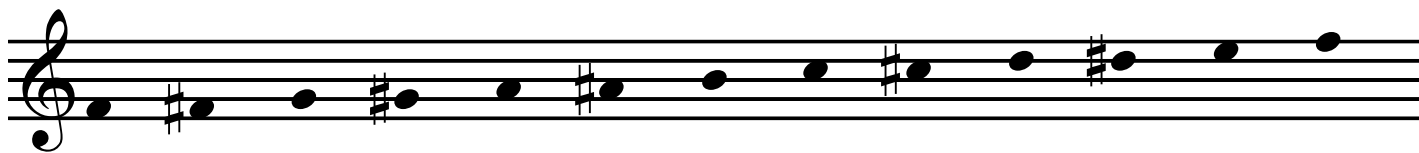
A sharp raises a pitch one half step. The sharp (#) is written before the note, however, when saying the note, the letter is said first. "F sharp."



A flat lowers a pitch one half step. The flat (b) is written before the note, however, when saying the note, the letter is said first. "F sharp."



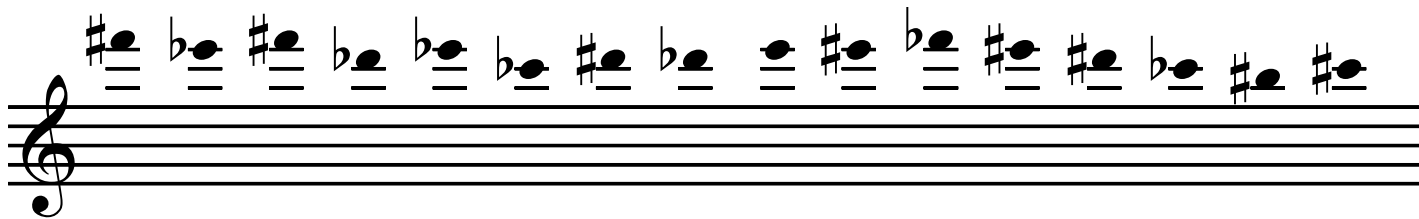
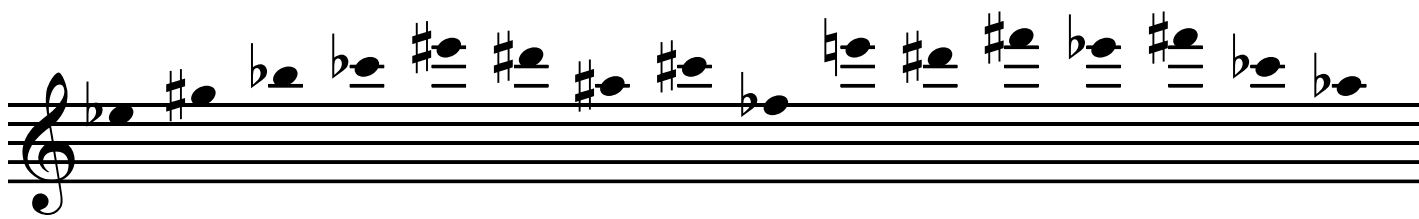
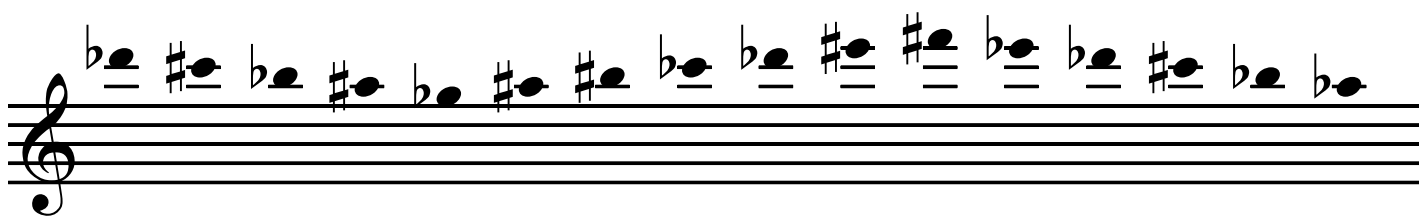
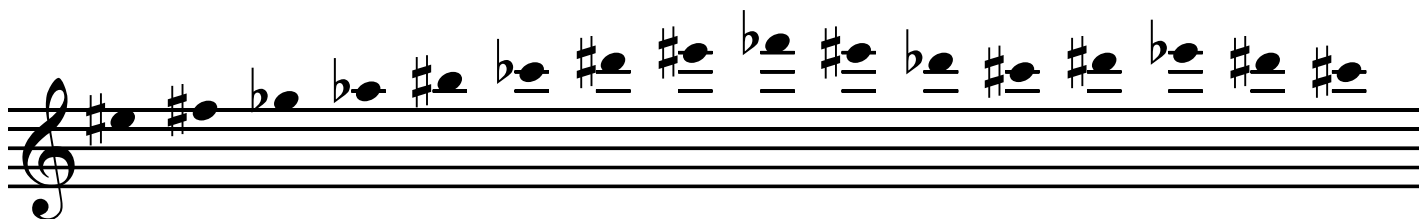
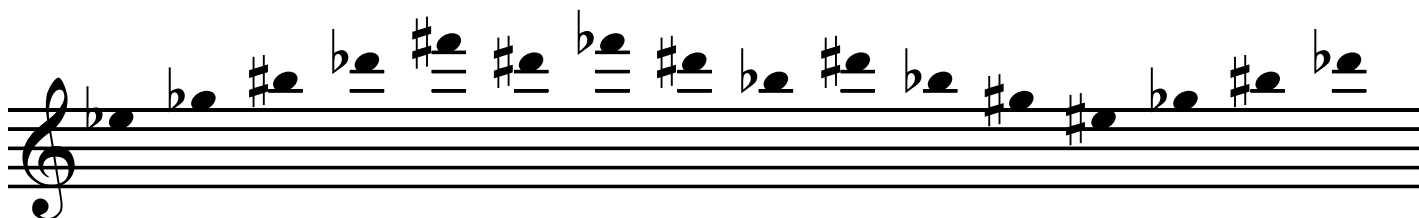
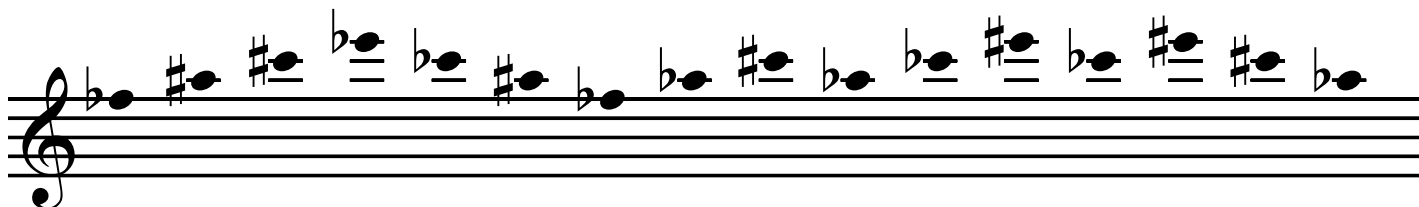
Enharmonics are two different names for the same pitch. Gb sounds just like F#, but look different on the staff.



Name _____ Instrument _____

Note Name Sheet No. 10

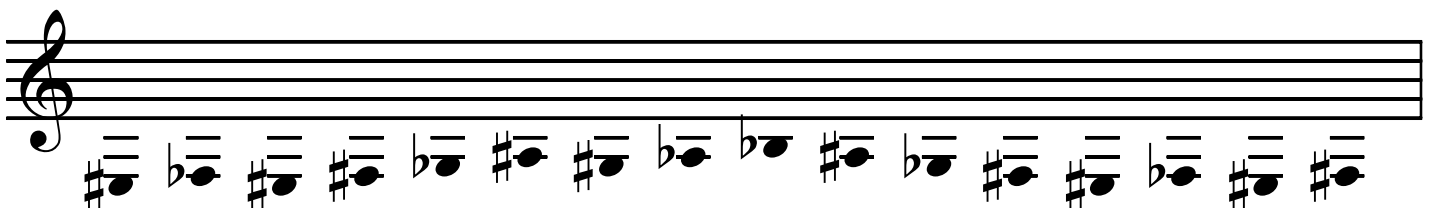
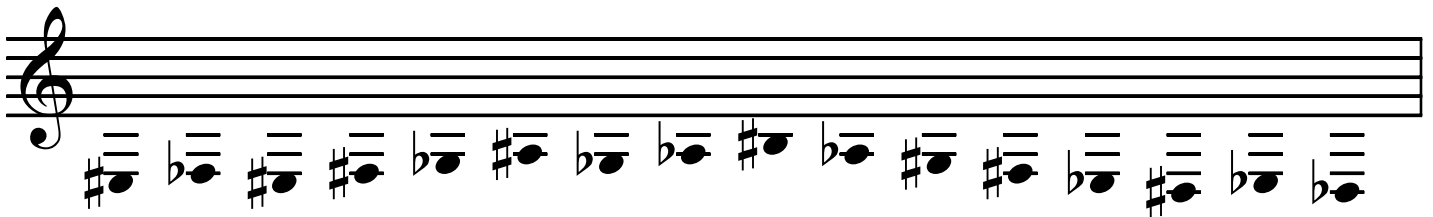
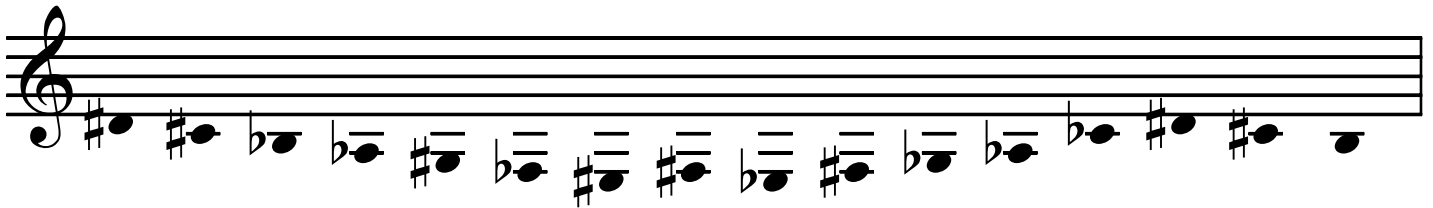
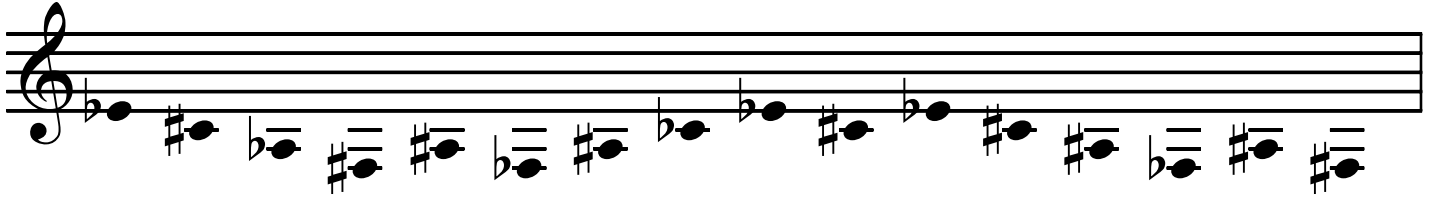
Sharps, Flats, Enharmonics Above The Staff



Name _____ Instrument _____

Note Name Sheet No. 11

Sharps, Flats, Enharmonics Below The Staff



Name _____ Instrument _____

Note Name Sheet No. 12

Sharps, Flats, Enharmonics

The sheet contains six staves of music, each with a treble clef. The notes and accidentals are as follows:

- Staff 1:** B-flat, C-sharp, C-sharp, D-flat, D-flat, E-sharp, E-flat, F-sharp.
- Staff 2:** F-sharp, F-sharp, G-flat, G-sharp, G-flat, G-flat, A-sharp, A-flat.
- Staff 3:** A-sharp, B-flat, B-sharp, B-flat, B-flat, C-sharp, C-flat, C-sharp, C-sharp, D-flat, D-flat, D-flat, E-sharp, E-flat, E-sharp.
- Staff 4:** B-flat, C-sharp, C-flat, C-sharp, C-sharp, D-flat, D-flat, D-sharp, E-flat, E-flat, E-sharp, F-sharp, F-sharp, G-flat, G-flat, G-sharp, A-flat, A-flat.
- Staff 5:** B-flat, C-sharp, C-sharp, D-flat, D-flat, D-sharp, E-flat, E-flat, E-sharp, F-sharp, F-sharp, G-flat, G-flat, G-sharp, A-flat, A-flat.
- Staff 6:** A-sharp, B-flat, B-sharp, C-flat, C-flat, C-sharp, D-flat, D-flat, D-sharp, E-flat, E-flat, E-sharp, F-sharp, F-sharp, G-flat, G-flat, G-sharp, A-flat, A-flat.